



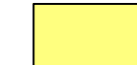




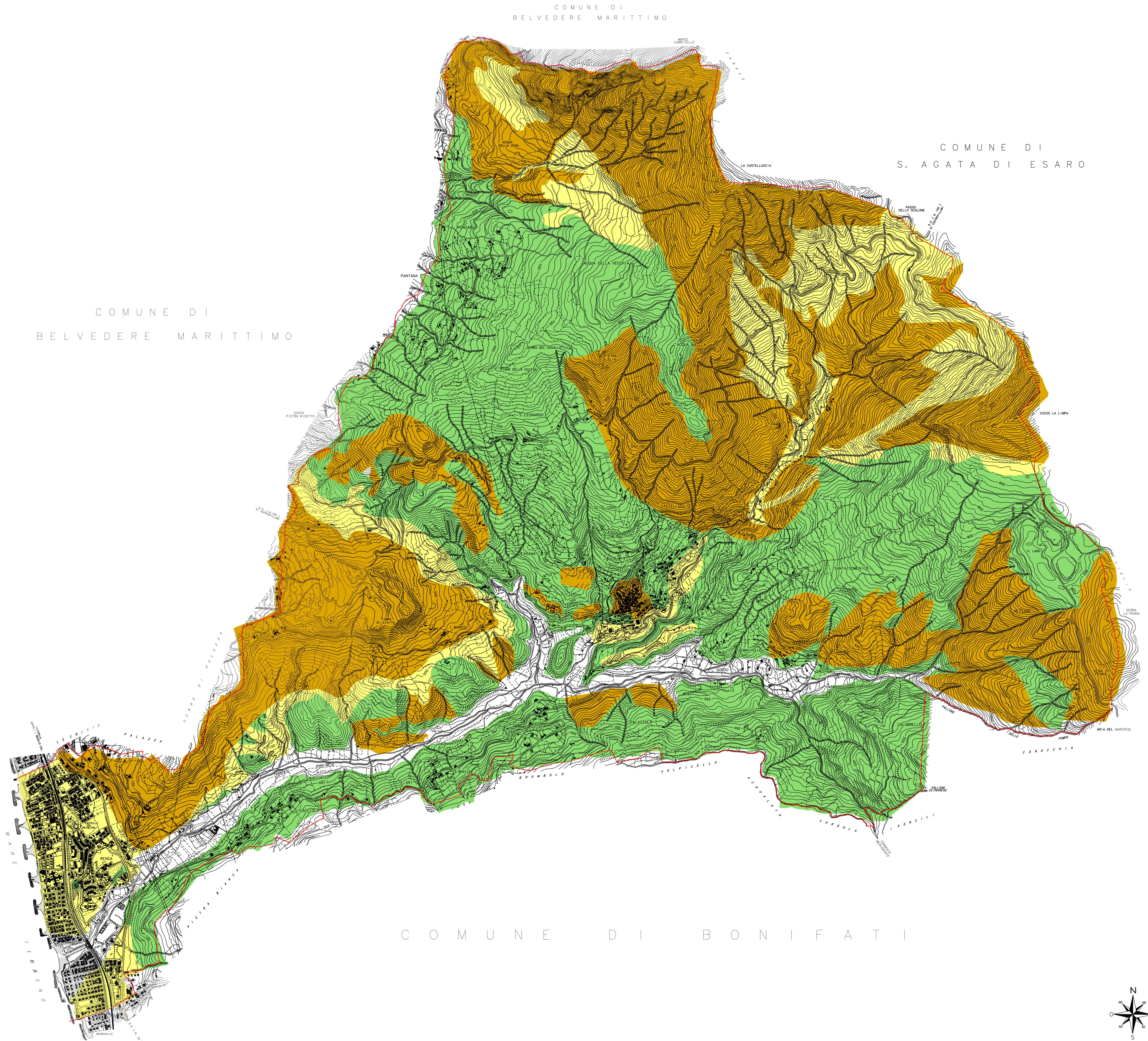
# Legenda

## Rete viaria

-  Rete ferroviaria
-  Strada Statale 18
-  Confine comunale

## LEGENDA PERMEABILITA'

-  9'Yj UH'dYf' dcfcgH
-  AXXc 'Y'Yj UH'dYf' dcfcgH
-  Medio bassa, aumento della dYfa YUV]H' 'Y] UH'U'ZUH fUn]cbY
-  6UggLz' Ui a Yblc 'XY' U'dYfa YUV]H' legata alla fratturazione

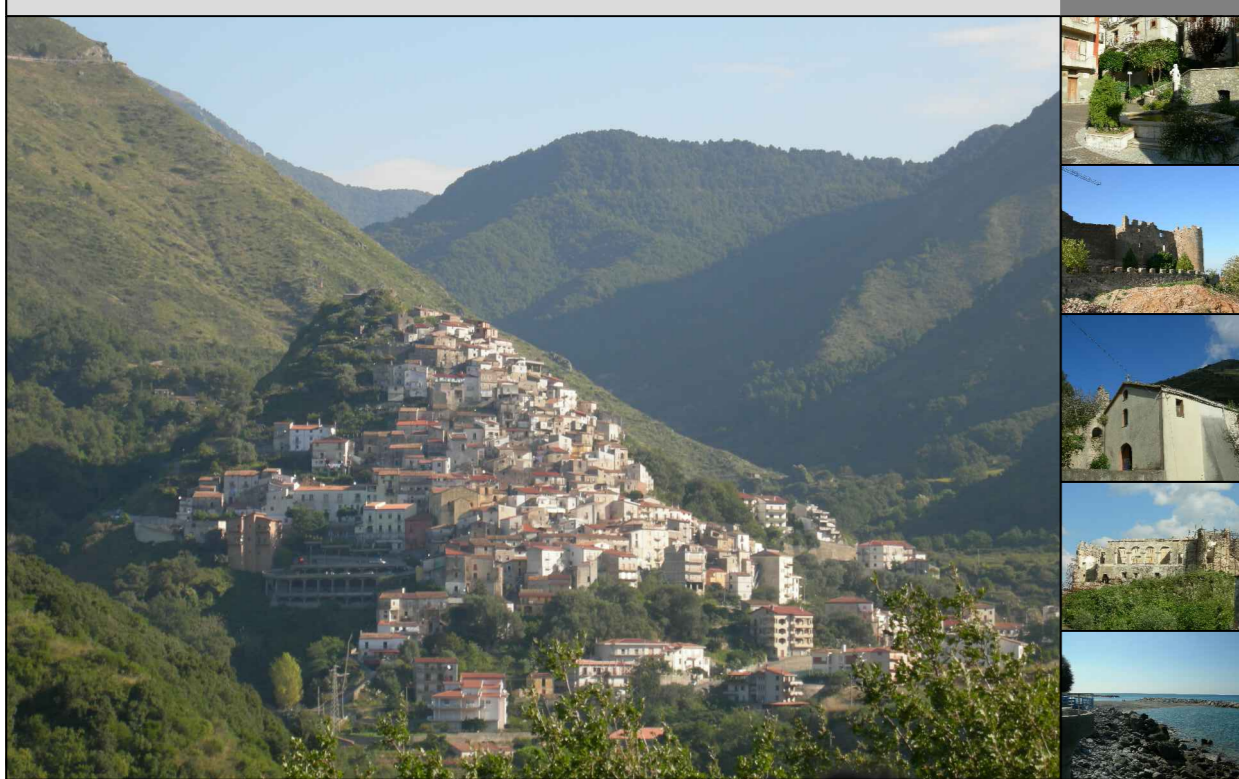


## COMUNE DI SANGINETTO

STUDIO PRELIMINARE

CARTA DELLA PERMEABILITA'

A 3



Coordinatori:  
 Prof. Arch. Mauro Franchi (DIRTTER)      Geom. Rosario Pietro Palermo (UTC)

Gruppo di lavoro  
 Dipartimento di Pianificazione Territoriale:  
 Ing. Maria Colucci    Ing. Annunziata Palermo    Dott. Annamaria Rosa (Economista)    Ing. Maria Francesca Viapiana

Geologo:  
 Dott. Alessandro Cittadino

Ufficio Del Piano  
 Arch. Raffaele Francesco Bruno    Ing. Filippo Capano    Dott. Giancarlo Girardo (Agronomo)

Scala 1:10.000      Data Ottobre 2010