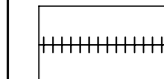

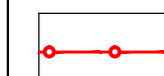



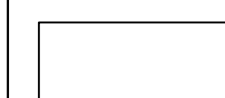


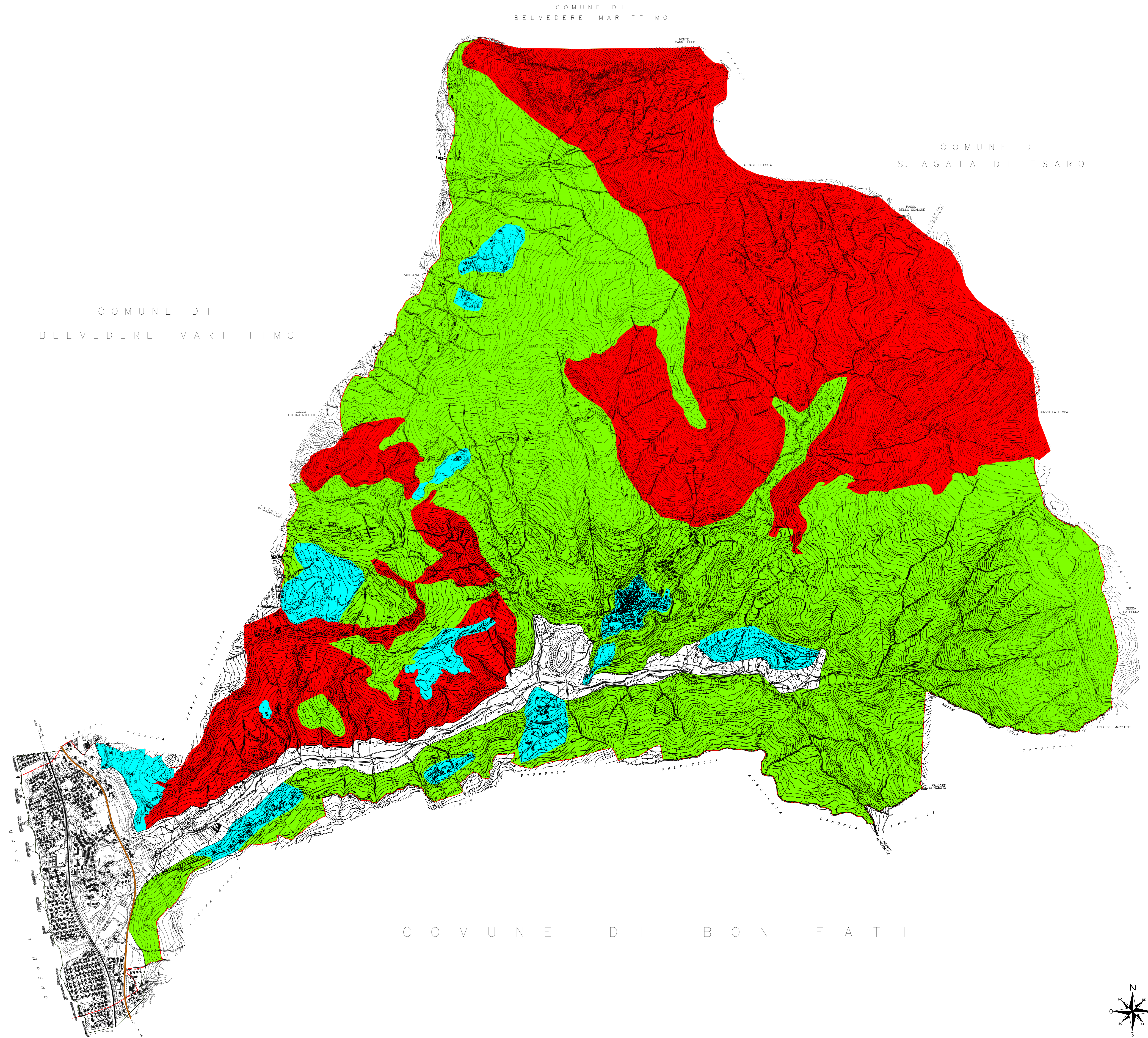
Legenda

Rete viaria

-  Rete ferroviaria
-  Strada Statale 18
-  Confine comunale

LEGENDA DELLA STABILITA'

-  Forte
-  Media
-  Limitata
-  Stabile



COMUNE DI SANGINETTO

STUDIO PRELIMINARE

CARTA DELLA STABILITA'

A7



Coordinatori
 Prof. Arch. Mauro Fiorani (DIPITER) Geom. Rosario Pietro Palermo (UTC)

Gruppo di lavoro
 Dipartimento di Pianificazione Territoriale:
 Ing. Maria Colucci Ing. Annunziata Palermo Dott. Annamaria Rosa (Economista) Ing. Maria Francesca Vespiana

Geologo
 Dott. Alessandro Cittadino

Ufficio Del Piano
 Arch. Raffaele Francesco Bruno Ing. Filippo Capano Dott. Giancarlo Grande (Agronomo)

Scala 1:10.000 Data Ottobre 2010